

WHAT LIES BENEATH THE SILVER KING?

May 2026

Cautionary note

Forward-looking information and other disclaimers

This presentation contains “forward-looking information” and “forward-looking statements” (collectively, “forward-looking information”) within the meaning of applicable securities laws. Forward-looking information may relate to our future financial outlook and anticipated events or results and may include information regarding our financial position, business strategy, growth strategies, addressable markets, budgets, operations, expected future – including exploration expectations as stated herein, plans and objectives. In some cases, forward-looking information can be identified by the use of forward looking terminology such as “plans”, “targets”, “expects” or “does not expect”, “is expected”, “an opportunity exists”, “budget”, “scheduled”, “estimates”, “outlook”, “forecasts”, “projection”, “prospects”, “strategy”, “intends”, “anticipates”, “does not anticipate”, “believes”, or variations of such words and phrases or statements that certain actions, events or results “may”, “could”, “would”, “might”, “will”, “will be taken”, “occur” or “be achieved”. In addition, any statements that refer to expectations, intentions, projections or other characterizations of future events or circumstances contain forward-looking information. Statements containing forward-looking information are not historical facts but instead represent management’s expectations, estimates and projections regarding future events or circumstances. This forward-looking information and other forward-looking information are based on our opinions, estimates and assumptions in light of our experience and perception of historical trends, current conditions and expected future developments.

Statements containing forward-looking information are not historical facts but instead represent management’s expectations, estimates and projections regarding future events or circumstances. This forward-looking information and other forward-looking information are based on our opinions, estimates and assumptions considering our experience and perception of historical trends, current conditions and expected future developments, as well as other factors that we currently believe are appropriate and reasonable in the circumstances. Despite a careful process to prepare and review the forward-looking information, there can be no assurance that the underlying opinions, estimates and assumptions will prove to be correct. Certain assumptions in respect of our ability to execute our business plan; our ability to retain key personnel; our ability to finance our overheads and exploration plans; our ability to obtain and maintain financing on acceptable terms; currency exchange and interest rates; the changes and trends in our industry or the global economy; and the changes in laws, rules, regulations, and global standards are material factors made in preparing forward-looking information and management’s expectations.

When relying on forward-looking statements to make decisions, we caution readers not to place undue reliance on these statements, as forward-looking statements involve significant risks and uncertainties and should not be read as guarantees of future performance or results and will not necessarily be accurate indications of whether or not the times at or by which such performance or results will be achieved. A number of factors could cause actual results to differ, possibly materially, from the results discussed in the forward-looking statements. With respect to the forward-looking statements contained in this presentation, assumptions have been made regarding, among other things: current and future commodity prices; future global economic and financial conditions; demand for commodities and related products, and the supply of commodities; the accuracy and veracity of information and projections sourced from third parties respecting, among other things, future industry conditions and demand for commodities; and, where applicable, each of those assumptions set forth in the footnotes provided herein in respect of particular forward-looking statements.

All of the forward-looking information contained in this presentation is expressly qualified by the foregoing cautionary statements. These statements speak only as of the date of this presentation. Except as may be required by law, the Company expressly disclaims any intention or obligation to revise or up- date any forward-looking statements or information whether as a result of new information, future events or otherwise.

Non-Reliance

This presentation does not provide full disclosure of all material facts relating to Prismo Metals Inc., or its securities, and is not subject to liability for misrepresentations under applicable securities legislation.

This presentation is property of Prismo Metals Inc. (the “Company”, “Prismo”, “us” or “we”) and is strictly confidential. It cannot be circulated or forwarded without our consent. Any graphs, tables or other information demonstrating our historical performance or that of any other entity contained in this presentation are intended only to illustrate past performance and are not necessarily indicative of our or such entities’ future performance. The information contained in this presentation is accurate only as of the date of this presentation or the date indicated. No securities regulatory authority has expressed an opinion about the securities described herein and it is an offence to claim otherwise.

As required by NI 43-101, Prismo hereby confirms that references to technical information about adjacent or nearby properties does not mean nor does it imply that Prismo will obtain similar information from its own properties.



Potential Big Copper in Arizona

The Silver King and Hot Breccia projects located in the heart of the Arizona copper belt offer investors exposure to potentially world-class copper discoveries

- 2 **Potentially world-class projects:** significant porphyry copper targets in Arizona
- 2 **Precious metals exploration properties** in Tier One jurisdictions
- 3 **Company-making discoveries** credited to accomplished leadership team and advisors

\$8M Mkt Cap

Common shares outstanding: 115 m, approximately 25% held by engaged and supportive founders, advisers, and partners.



Accomplished leadership

A proven team of successful explorers with a legacy of discovery balanced by capital markets expertise



Alain Lambert
CEO & Co-founder

- 35 years: financing and advising small- to medium-sized companies
- Involved in raising \$1B via public and private financings
- Extensive capital market network



Dr. Craig Gibson
CXO & Co-founder

- Founder of Mexico/Arizona-based exploration services company
- Director, Garibaldi Resources
- PHD in Economic Geology
- Qualified Person under NI 43-101



Dr. Linus Keating
Special Advisor

- 40+ Years experience with expertise in porphyry copper
- 14 years with Kennecott/Rio Tinto as Principal Geologist and District Manager
- Discovery Track Record
- AIPG Certified Professional Geologist and NI 43-101 Qualified Person

Successful Explorers

Redefining silver exploration in Arizona and Mexico

Steve Robertson
Advisor

- As CEO of Infinitem Copper, guided company through acquisition of projects in Arizona and Mexico
- Founder, Sun Metals, where he led the team through a significant copper-gold discovery
- Imperial Metals: designed successful Red Chris deep drilling program, increasing global resources

Dr. Peter Megaw
Co-founder and Technical Advisor

- Discovered MAG Silver's Juanicipio silver deposit in Fresno district, for which he won 2017 Thayer Lindsey award
- Discovered Excellon Resources' Platosa Mine and co-founded Minaurum Gold
- Winner: Society of Mining Engineers 2012 Robert M. Dryer Award for Excellence in Applied Economic Geology

Arizona: Mining Country

ARIZONA COPPER BELT

Produces 2/3 of USA's copper

EXCELLENT INFRASTRUCTURE

Mining-friendly jurisdiction

Roads, power, labor

SURROUNDED BY GIANTS

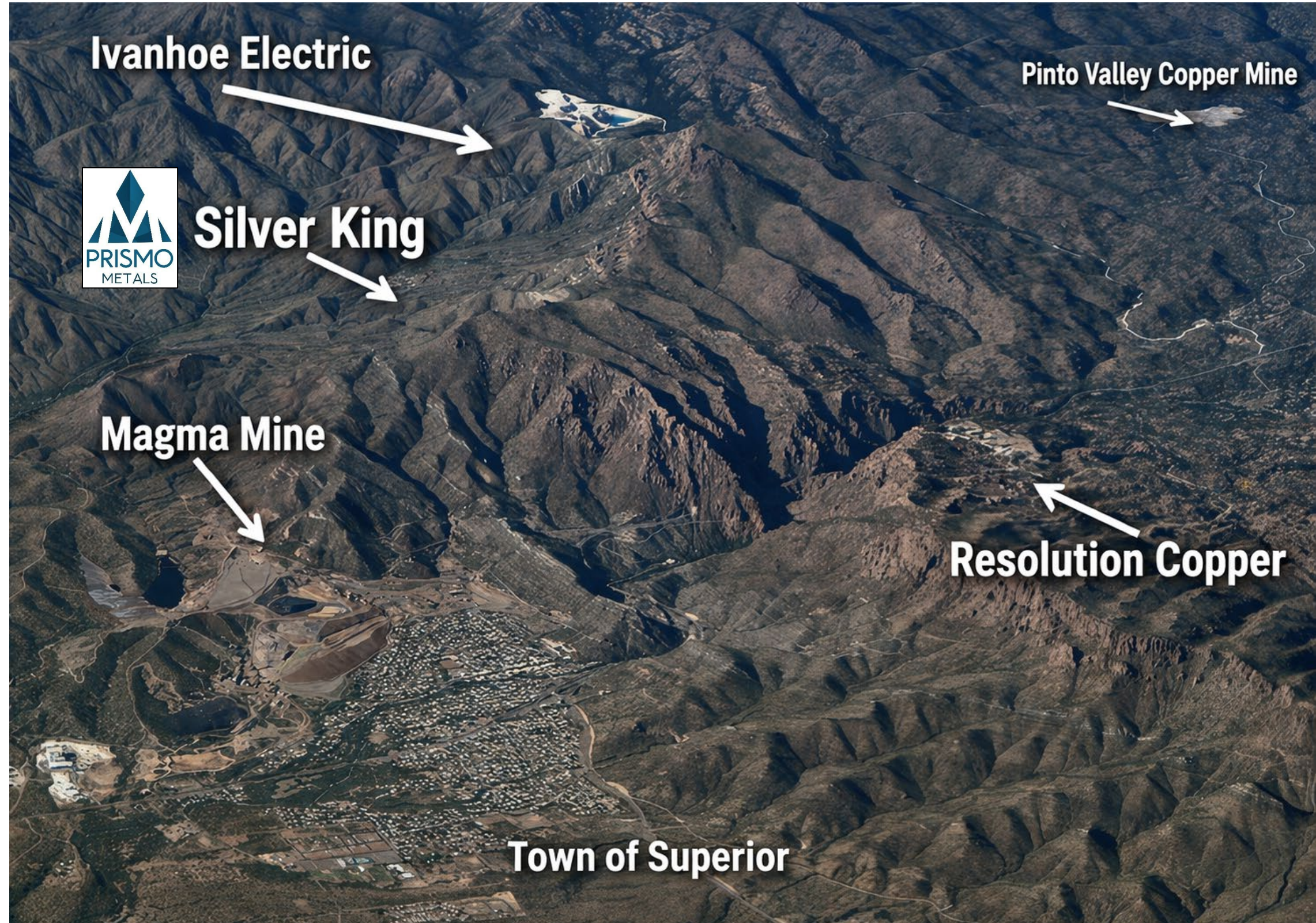
All large mining companies present

CSE: PRIZ | OTCQB: PMOMF | FSU: 7KU

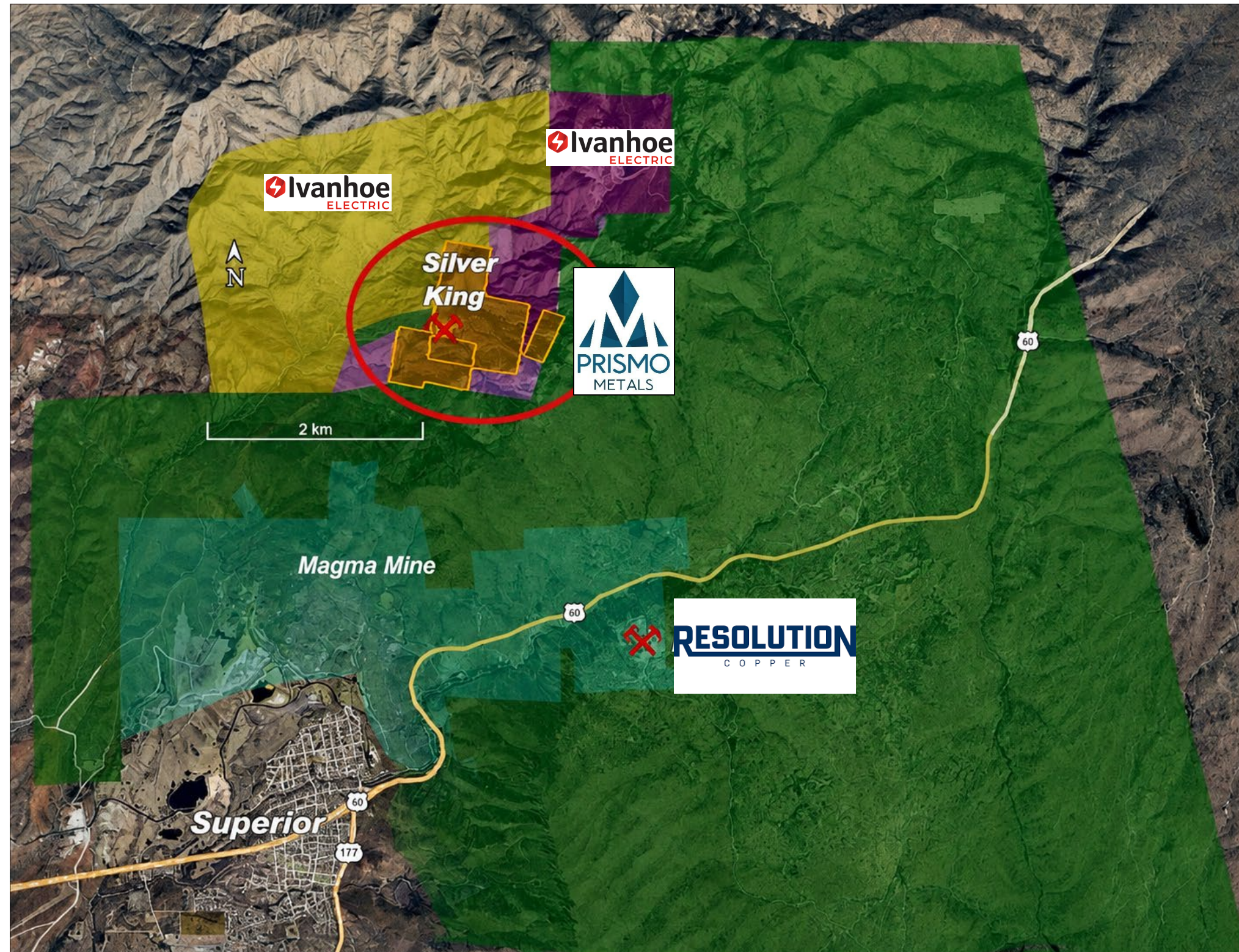


Superior (Pioneer) Mining District, AZ

- The Superior (Pioneer) Mining District in Arizona is renowned for its rich history of silver and copper mining, dating back to the 1870s.
- It gained fame with the **Silver King Mine**, then **Arizona's richest silver producer**, and later the Magma Mine (**originally Silver Queen**), which transitioned to major copper output.
- Today, it's highlighted by the massive undeveloped **Resolution Copper** deposit, **one of the world's largest**, underscoring the district's ongoing significance in copper production
- Arrival of **Ivanhoe Electric** in the district (Nov 2025)



Silver King – Enclosed by Giants



Essentially
Three Players
Resolution Copper
(Rio Tinto and BHP)

Ivanhoe Electric
(NYSE: IE)

Prismo Metals
(CSE: PRIZ)

Historic Silver Producer... Potentially Transitioning to Porphyry Copper



- No modern exploration or drilling recorded
- No exploration at depth until Prismo
- Vertical zoning established — shallow high-grade silver transitioning into deeper possible porphyry-style copper mineralization, perhaps similar to the silver-to-copper transition at the nearby Magma mine
- New Discovery: Potassic alteration and chalcopyrite in quartz monzonite intrusion at 1,100–1,600 ft

1875

Staking of the Silver King Mine

1879-1889

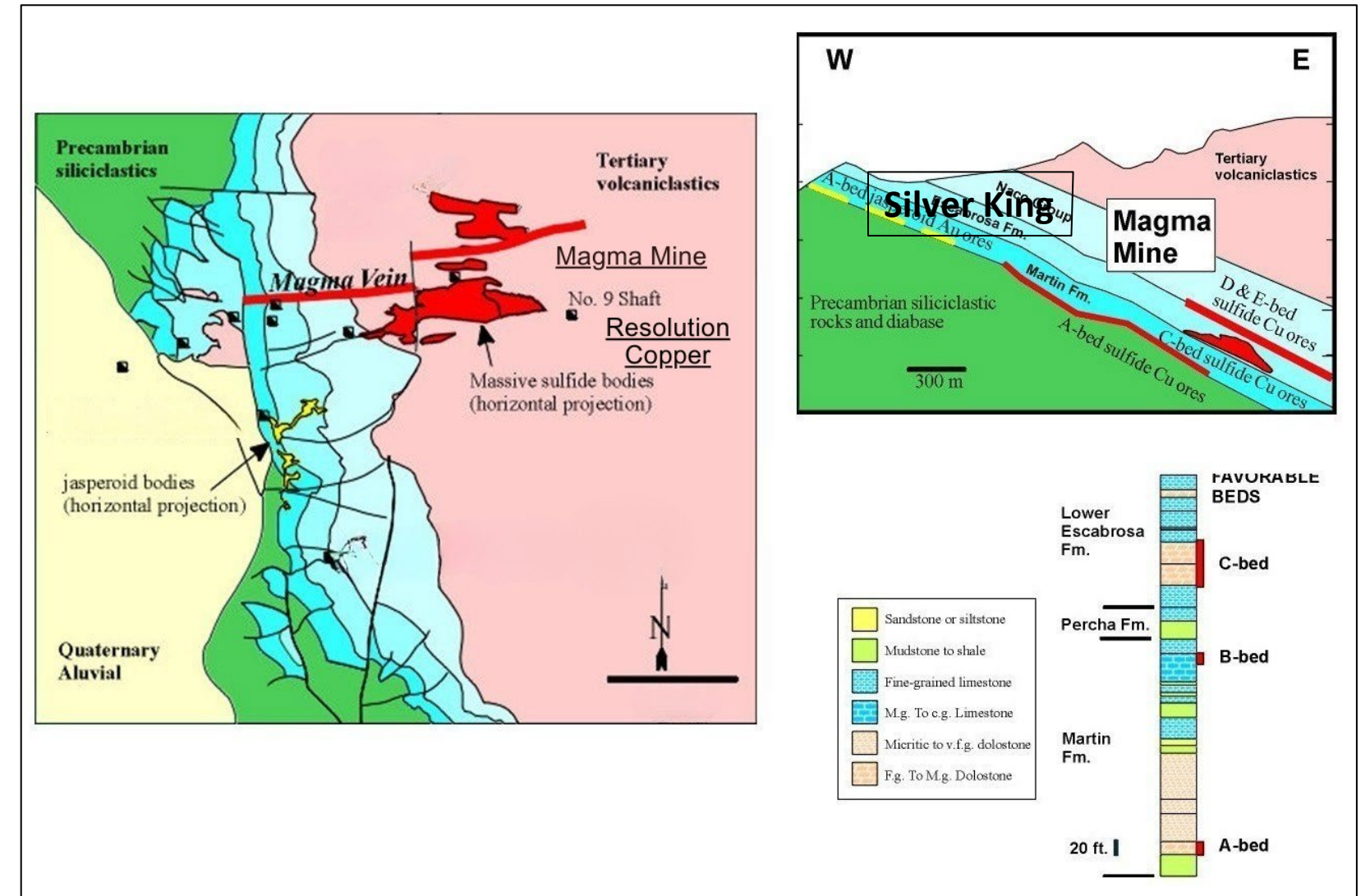
~ 6M ounces of silver at an average head grade ranging from 2,000 to 750 grams per ton with significant copper, lead, and zinc values

1918-1928

More than 231K ounces of silver at a head grade of 530 grams per ton silver

Magma Copper Mine: A Good Analogy for Silver King

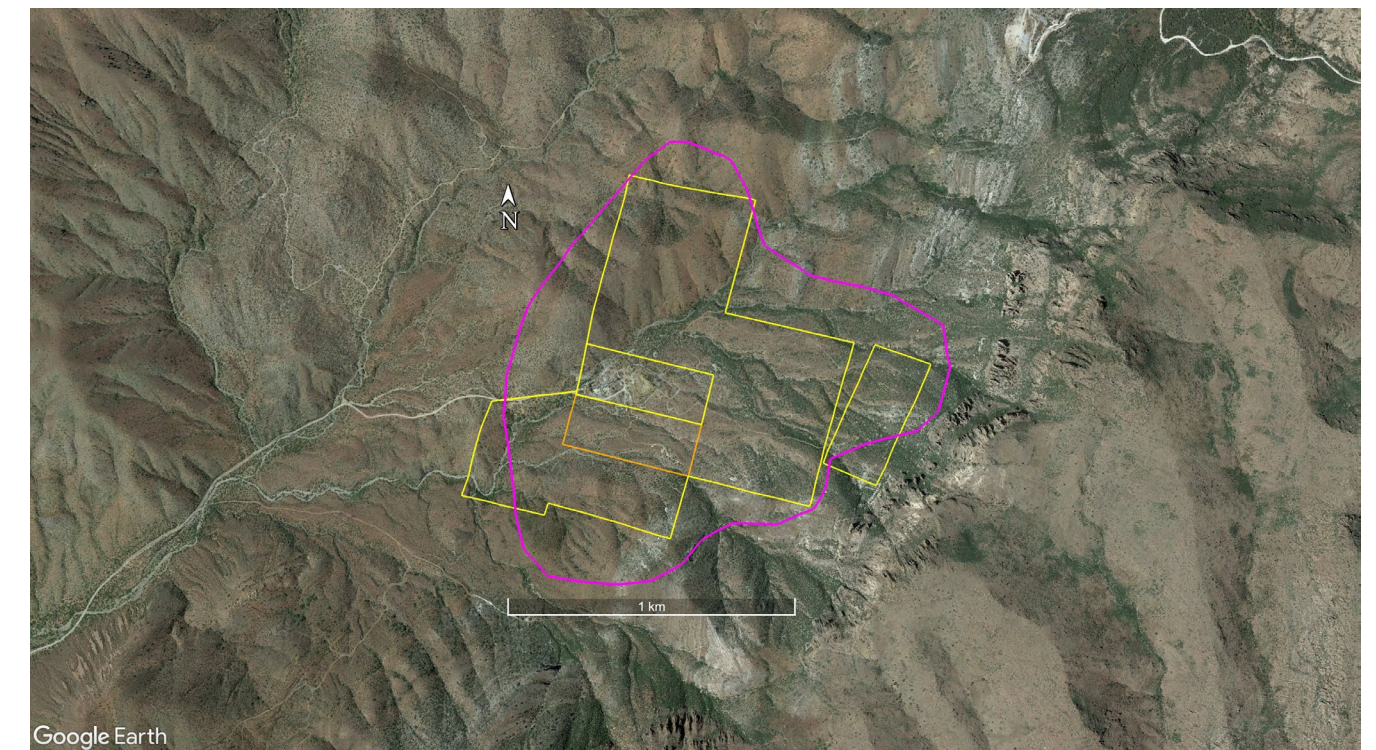
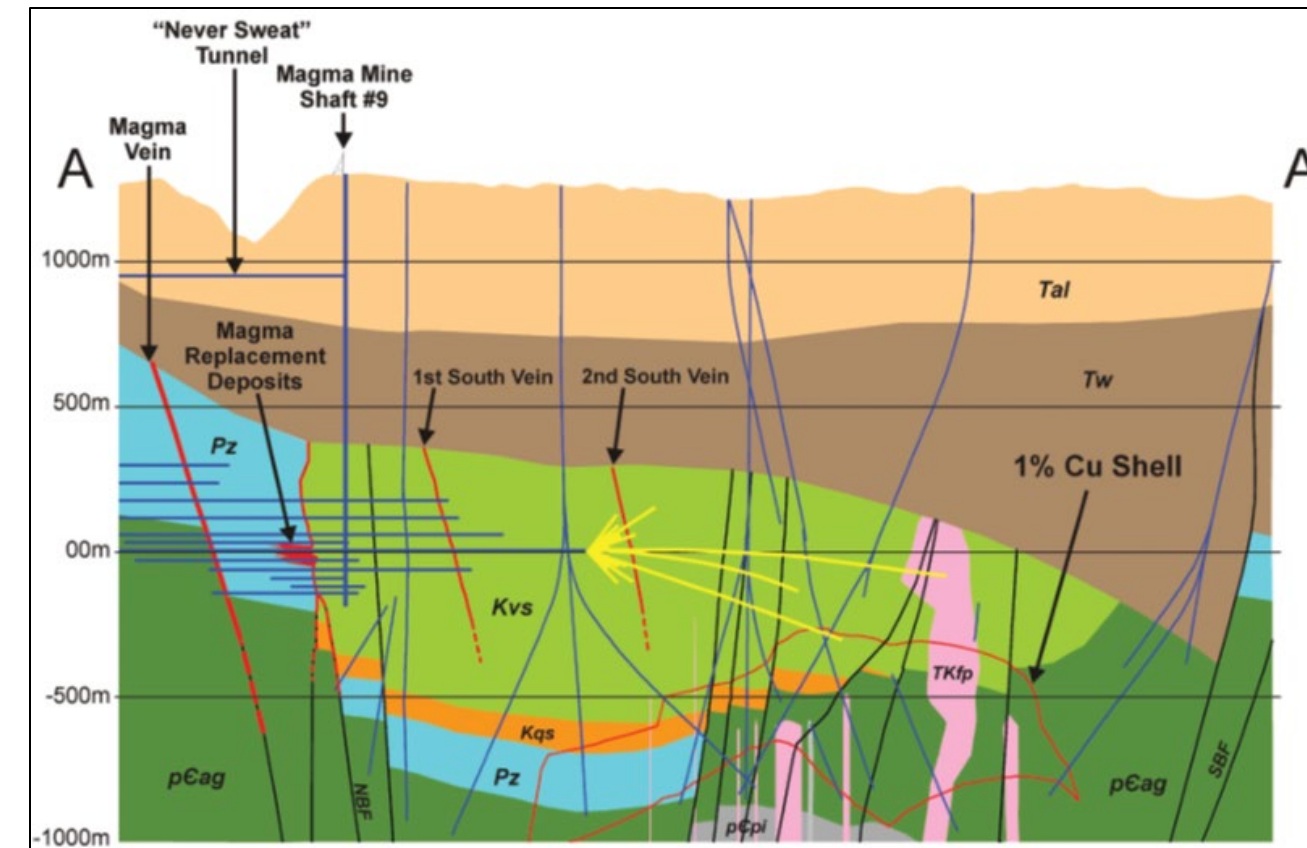
- Discovered in 1875 as the Silver Queen Mine, it focused on high-grade silver veins with initial shallow workings.
- In 1912, the mineralization shifted to copper-dominant sulfides like chalcopyrite and bornite at depth of 600-800 feet
- Became a major copper producer, yielding over 24.5 million tons of ore at ~5% Cu, plus 25 million ounces of silver and zinc byproducts.
- Magma represents deeper extensions linking it to the Resolution porphyry to the west, suggesting Silver King's shallower silver veins may overlie untapped copper zones, enhancing exploration potential
- Underground exploration at Magma eventually led to the discovery of the nearby Resolution copper deposit



Dr. Gibson: "Silver King may be a 'telescoped' deposit... exactly like Magma's silver-to-copper transition."

Resolution Copper: The Giant Next Door

- **Joint Venture:** BHP acquired Magma in 1996, then partnered with Rio Tinto to form the Resolution Copper joint venture (Rio Tinto 55%, BHP 45%).
- **Discovery:** The Resolution Copper deposit was identified in 1995 by Magma Copper Company geologists during deep drilling (~5,000–7,000 ft)
- **Massive Scale:** The Resolution Copper deposit contains an estimated 1.859 billion metric tons resource, making it one of the world's largest undeveloped copper deposits.
- **High-Grade Orebody:** Average grade of ~1.52% copper about **62.3 billion pounds of Cu**
- **Strategic Significance:** It could supply up to 25% of U.S. copper demand for 75 years, create thousands of jobs, and boost Arizona's economy by billions.
- **March 16, 2026:** announced \$500 million drilling campaign.



Yellow: Silver King Claims

Pink: Resolution Copper Footprint

Ivanhoe Electric – Neighbor Momentum & Validation

- Ivanhoe Electric (NYSE: IE), led by **Robert Friedland**, has optioned claims directly north and west of Silver King in November 2025
- Currently in the **permitting process** for geophysics and drilling
- **Expected to be fully permitted before the end of 2026**
- **Plans to spend millions on exploration**
- Past drilling on the project intercepted localized high temperature alteration with focused zones of bornite-chalcocite-chalcopyrite mineralization at depth.

Same geological theory as Prismo:

“There is likely another Resolution-style porphyry copper system in the immediate area.”

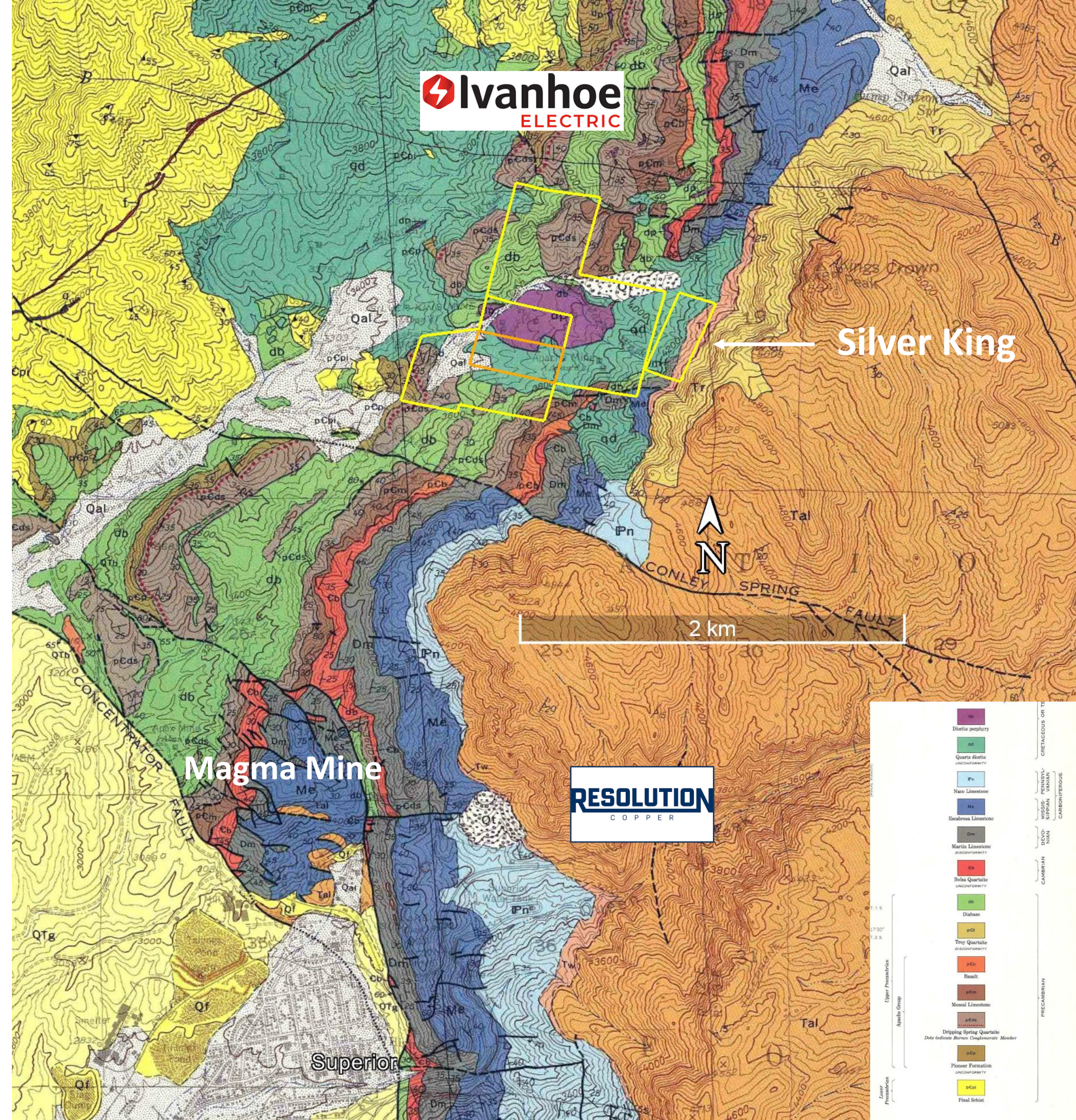


Visit to Ivanhoe Electric project by CEO Alain Lambert & Special Advisor Dr. Linus Keating (April 2026)

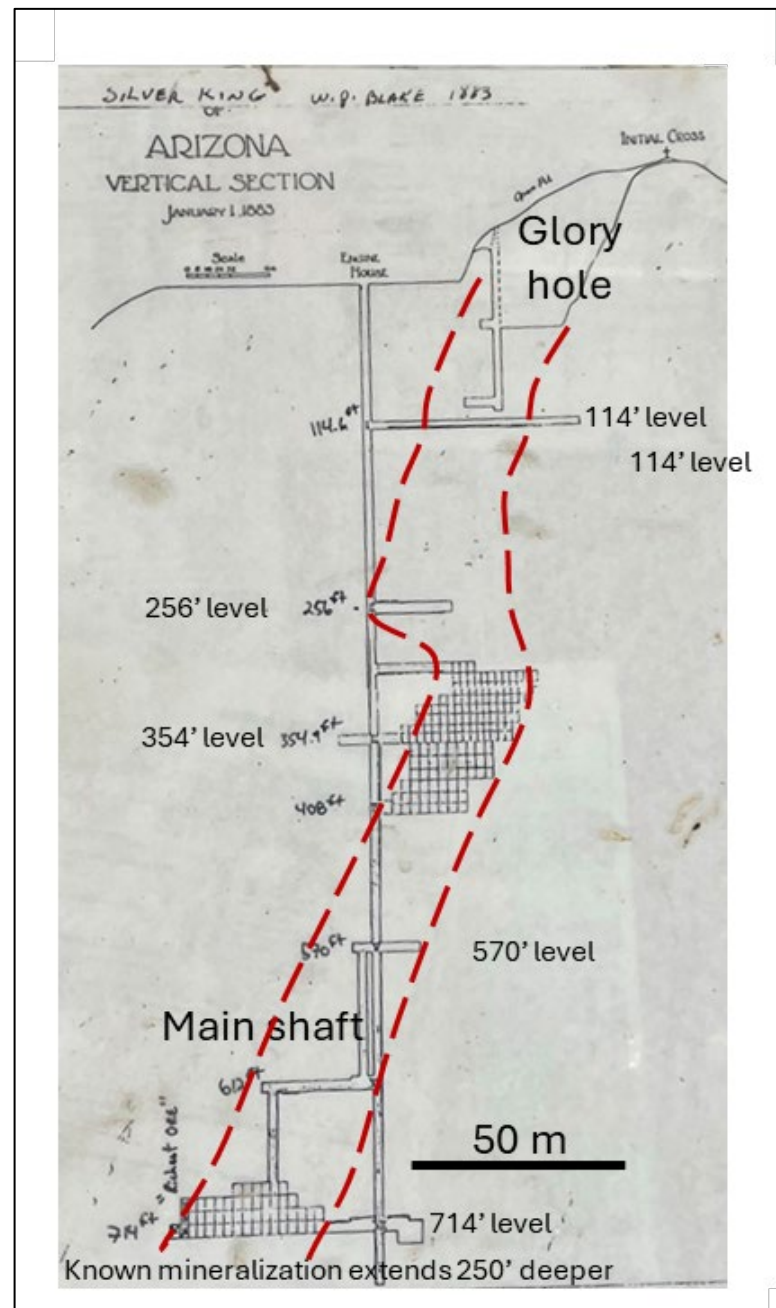
Shared Geology

- **Favorable Host Rocks:** Mines in Superior District feature Precambrian Pinal Schist basement, diabase sills, Apache Group sediments, and Paleozoic limestones (e.g., Martin Fm.), tilted eastward and intruded by Laramide quartz diorite and andesite.
- **Structural Similarities:** Fault-controlled mineralization via east-trending faults and veins, with hydrothermal alteration including silicification and potassic zoning.
- **Zoning & Potential:** Vertical zoning now proven at Silver King — shallow silver-enriched epithermal system transitioning into deeper potassic porphyry-style copper, exactly as seen at Magma/Resolution.

“We’re heading toward the heat source, not away from it.” – Dr. Linus Keating



The Classic Porphyry-Epithermal Model – Potentially What We Drilled



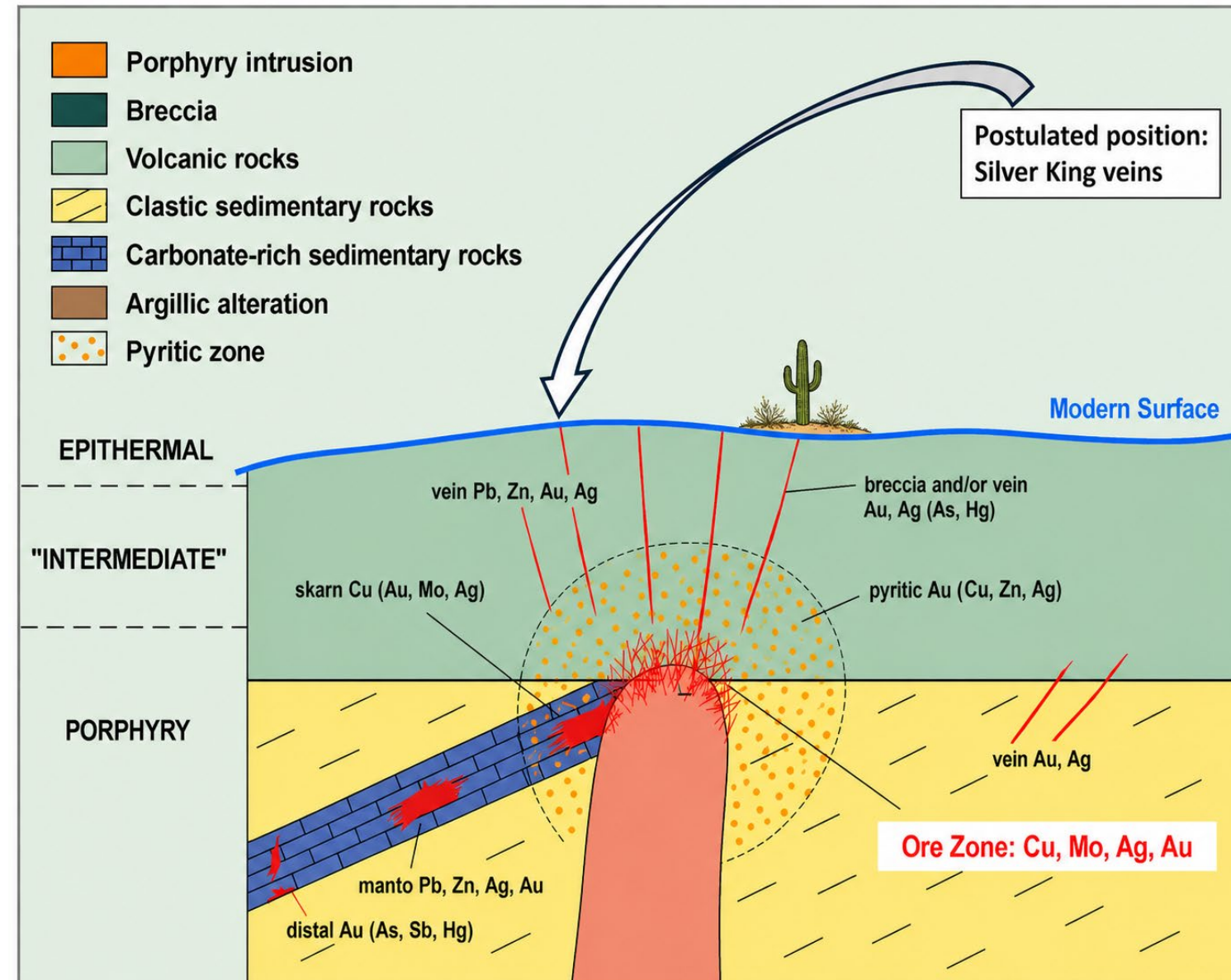
- 8 holes completed for 1,272 m
- Seven holes were designed to test the upper portions of the historically mined Silver King pipe-like mineralized body,
- One hole (SK-26-07) was a deep test targeting the down-plunge extension below the historic mine workings
 - Deep hole SK-26-07 (1,600 ft / 488 m) drilled below historic mine bottom
 - Intersected previously unrecognized quartz monzonite intrusion at depth
 - Strong potassic alteration — secondary biotite + pink K-feldspar selvages
 - Abundant disseminated pyrite + pyrite veinlets with local chalcopyrite and pyrrhotite
- Clear vertical zoning established: shallow high-grade silver epithermal → deeper porphyry-style copper

Positive assays from Silver King (expected June 2026) could reinforce the Magma-style model and de-risk step-out drilling toward the postulated hypogene Cu core.

BREAKTHROUGH DRILL HOLE (SK-26-07)

A deeper hole changed the understanding of the system

- Drilled to ~ 1,600 ft (488 meters)
- Intersected **intrusive-hosted mineralization below historic workings**
- Strong **potassic alteration (biotite + K-feldspar)**
- **Abundant pyrite with local chalcopyrite**
- Classic zoning: **epidote + chlorite above**
- Appears to represent separate Cu-bearing mineralization event at Silver King
- First **clear evidence of hypogene copper mineralization at depth**



Schematic diagram of a porphyry Cu system in the root zone of an andesitic stratovolcano showing mineral zonation and possible relationship to skarn, manto, "mesothermal" or "intermediate" precious-metal and base-metal vein and replacement, and epithermal precious-metal deposits (modified from Kirkham and Sinclair, 1995).

Silver bearing minerals and other sulfides



Potassic Alteration



Phase 2 Exploration Underway: Targeting the Porphyry Copper Core

- Detailed petrographic thin-section analysis of key rock types and alteration minerals
- Multi-element geochemical sampling and mapping across the entire mineralized embayment
- Comprehensive structural and alteration mapping, including the Crown porphyry stockwork and Black Diamond skarn
- Refined targeting for a larger, deeper step-out drill program to test the full extent of the hypogene Ag-Cu porphyry system
- Down-hole geophysics to map the intrusive body and alteration zones in 3D

From discovery to definition — Phase 2 is designed to unlock the copper porphyry potential at Silver King.

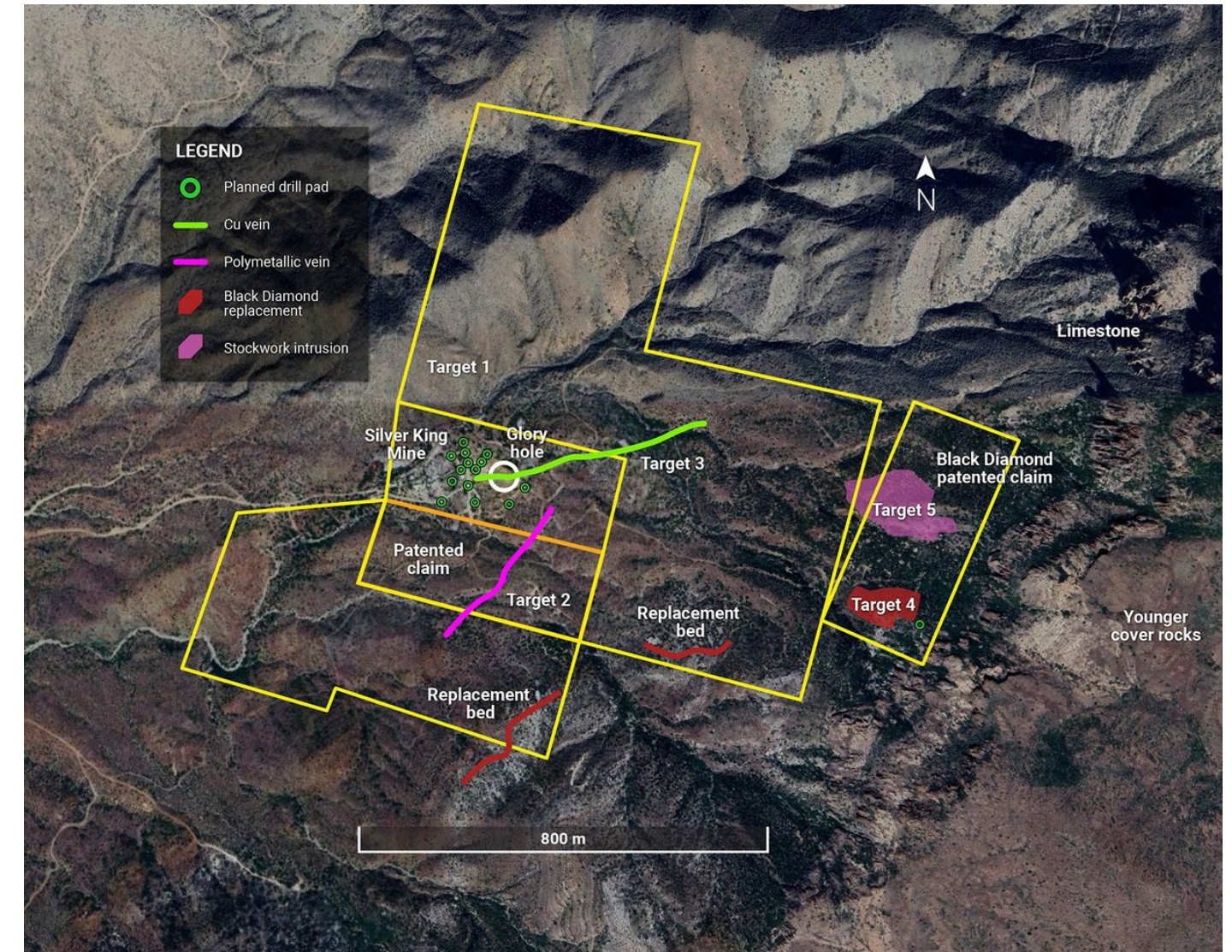
Vertical zoning established — shallow high-grade silver transitioning into deeper possible porphyry-style copper mineralization

Similar to the silver-to-copper transition at the historic nearby Magma mine (formerly Silver Queen Mine)

Important copper targets on east side of project

Results highlight highly mineralized nature of the area and identify new drill targets

sample	Width (m)	Au (g/t)	Ag (g/t)	Cu (%)	Pb (%)	Zn (%)
BLACK DIAMOND COPPER REPLACEMENT ZONE						
544502	grab	0.47	7	1.35	–	0.02
544507	dump	2.26	25	2.43	–	0.23
544508	0.7	0.73	12	1.11	–	0.28
544575	0.5	1.08	0.15	5.56	0.013	0.03
544578	0.8	0.285	12.43	6.02	–	0.01
CROWN PORPHYRY STOCKWORK ZONE						
544561	2.0	0.02	177	0.07	0.37	0.02
544563	0.5	0.03	176	-	0.09	0.01
544591	1.0	5.19	46.44	0.05	0.21	0.06
544592	1.0	4.06	13.97	0.02	0.10	0.07



Path Forward & Major Near-Term Catalysts

- **Phase 1 Assay Results:**

- All 8 holes expected in June 2026 — will include the important deeper Hole 7 that intersected potassic alteration and intrusive rocks

- **Detailed Surface Mapping & Geochemistry:**

- Currently underway results to be released together with Phase 1 assays

- **Downhole Geophysics & Structural Interpretation:**








- Planned to vector Phase 2 drilling

- **Phase 2 Drill Program Design:**

- Expected to be finalized and announced in July/August 2026 — targeting the porphyry copper core

- **Ivanhoe Electric** to be permitted for geophysics and drilling

Comparison Table: Canadian-Listed Early-Stage Porphyry Copper Explorers

		  	 				
		Arizona Focused Exploration Companies			Americas Focused Exploration Companies		
Ticker	Prismo Metals (CSE: PRIZ)	Intrepid Metals (TSXV: INTR)	Copper Fox Metals (TSXV: CUU)	Faraday Copper (TSX: FDY)	Algo Grande Copper (TSXV: ALGR)	Super Copper (CSE: CUPR)	San Lorenzo Gold (TSXV: SLG)
Primary Project	Silver King	Corral Copper	Mineral Mountain	Copper Creek	Adelita	Cordillera Cobre	Salvadora
Location	Arizona, USA	Arizona, USA	Arizona, USA	Arizona, USA	Sonora, Mexico	Chile	Chile
Nearest Major Deposit	Resolution (Rio Tinto/BHP) – 3.4 km	Bisbee (historic major Cu camp)	Resolution (Rio Tinto/BHP) – 25 km	Resolution (Rio Tinto/BHP) – 120 km	Buenavista / Cananea district	Candelaria / Manto Verde	El Salvador (Codelco) – 15 km
Stage & Drilling Status	Phase 1 completed 8 holes. 1,272 meters	~10,000 m drilling completed	Maiden drilling completed (2026)	Advanced Exploration → Early Development (PEA Stage)	Initial drilling completed	Surface work + geophysics; early drilling planned	Early stage drilling
Market Cap (CAD)	~8 million	~65–89 million	~345–351 million	~\$1.38 Billion	~\$27–\$28 million	~\$31–\$34 million	~\$258–\$351 million
Key Highlights	Epithermal Ag vein upper expression of potential porphyry; immediate neighbor to Ivanhoe Electric and Rio/BHP	Porphyry copper-gold + CRD system; Teck Resources strategic investor	Large blind Laramide porphyry target; recent propylitic zone intercepts	Large Laramide porphyry system with breccia-hosted mineralization	Skarn system with strong porphyry potential at depth; Cu-Ag-Au focus	Porphyry copper targets in prolific Atacama region	Multiple porphyry copper-gold targets in proven mega-porphyry belt

Prismo Metals:

- Lowest market cap
- Recent positive drilling
- Unique location
- Large target

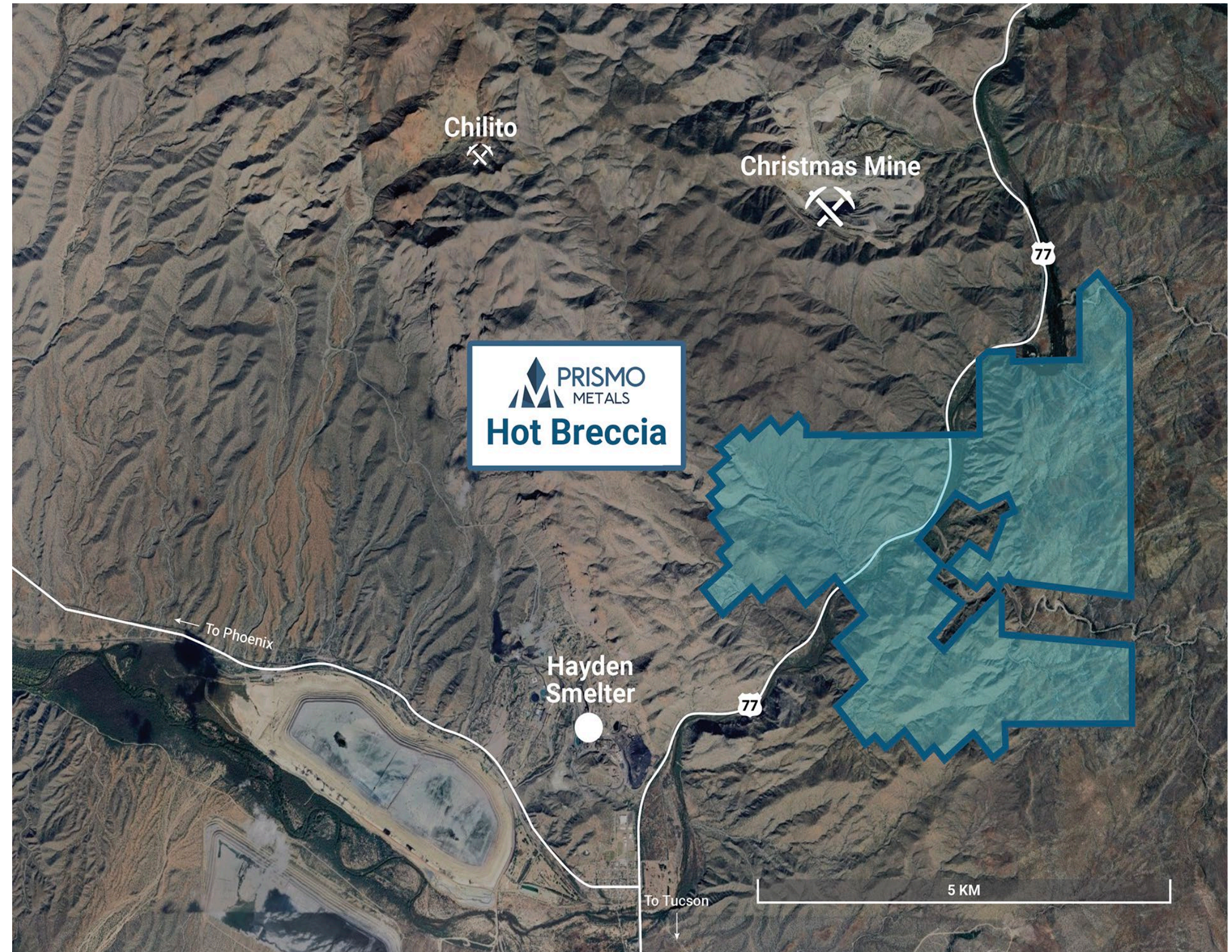
Fully permitted Hot Breccia

Indirect interest through 24% ownership of
Blade Resources

LARGE COPPER PROSPECT

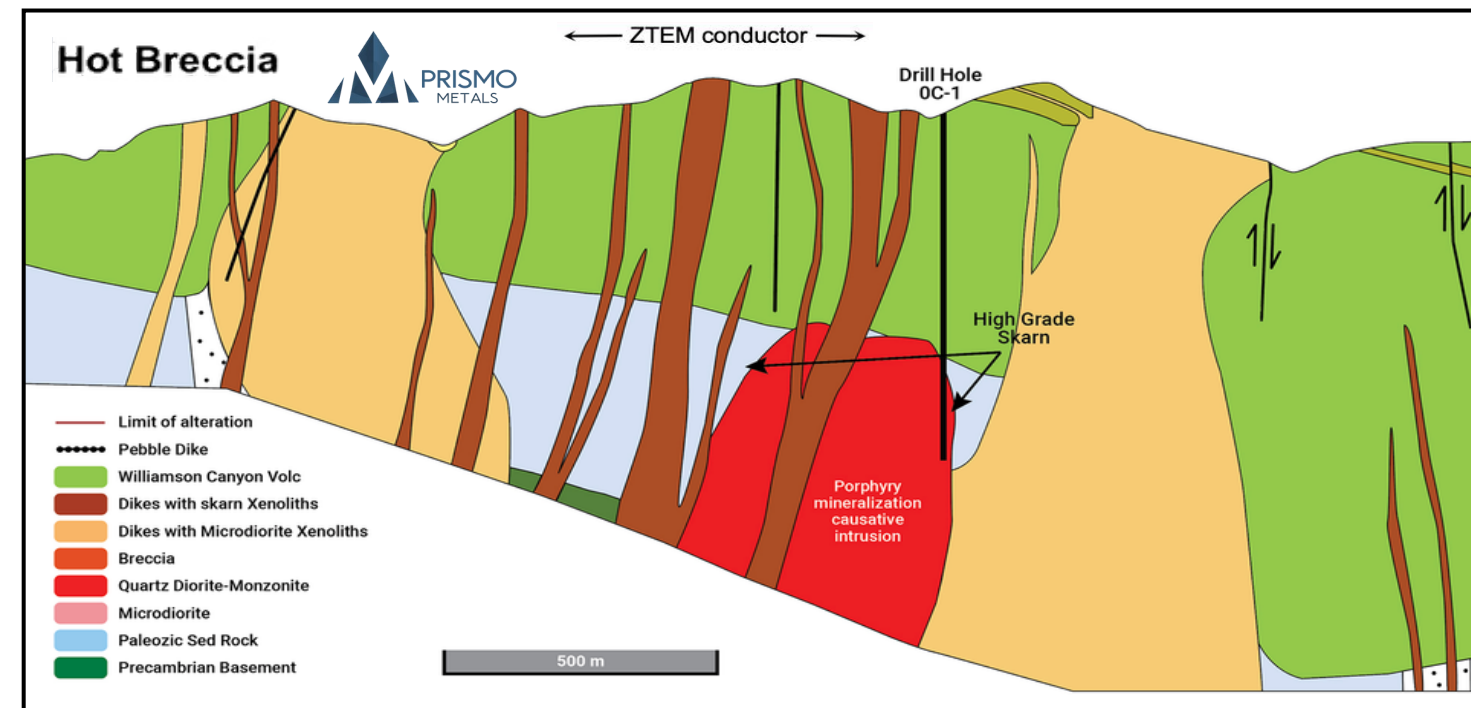
Looking for Resolution style target

- Located in district that hosts many of North America's largest porphyry copper deposits and over 200 known deposits
- Includes giants like Resolution, Morenci, Ray, Miami, and Bagdad, operated by majors like BHP, Freeport-McMoRan, Rio Tinto

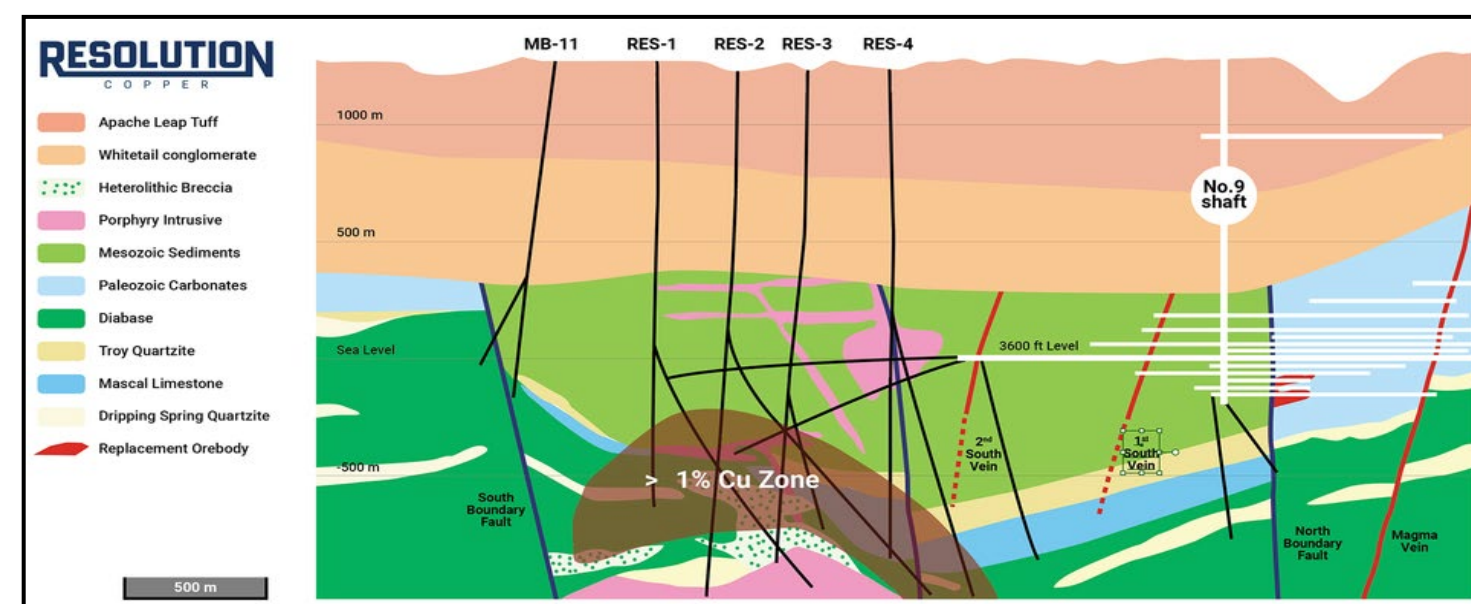


Fully permitted Hot Breccia

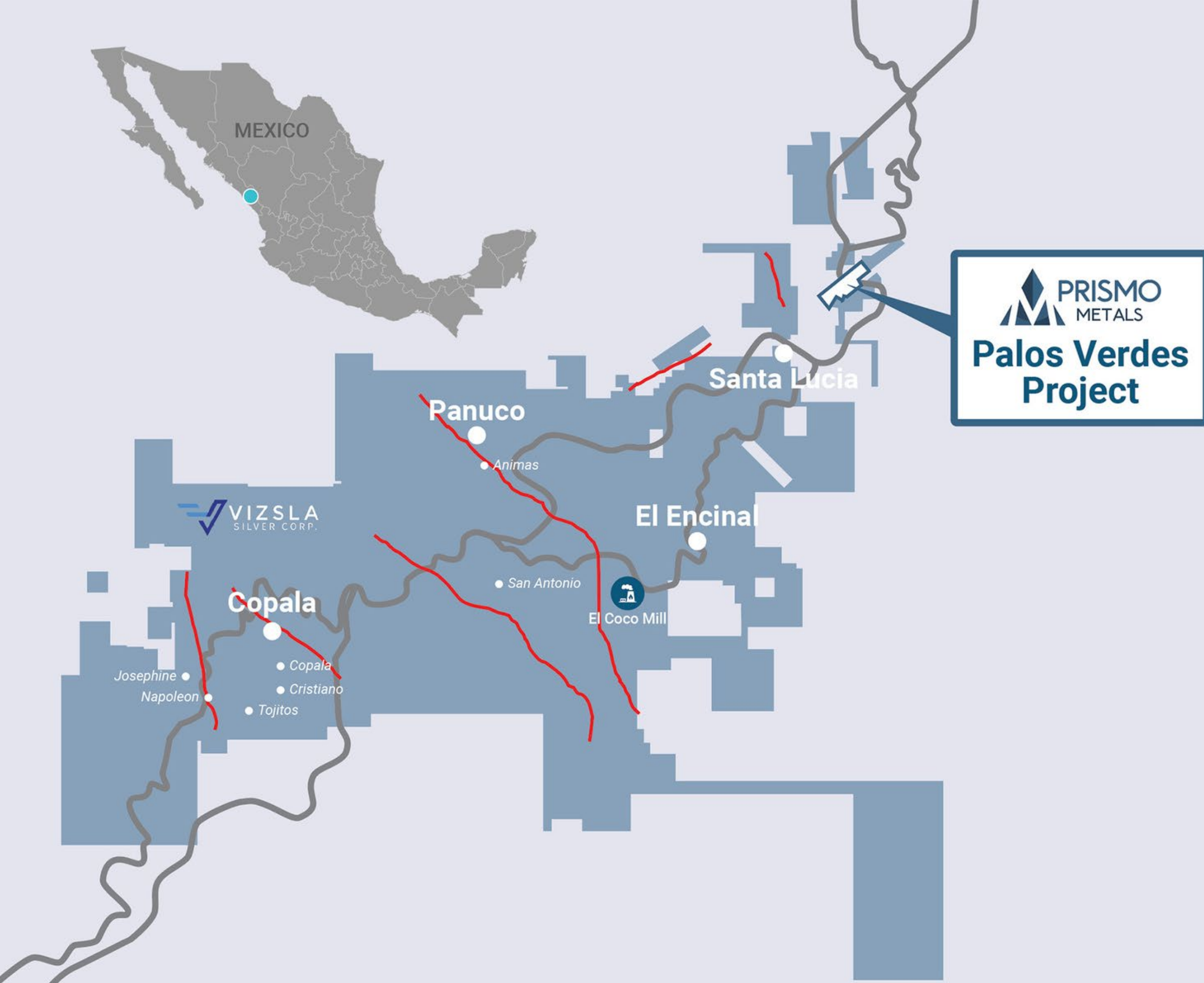
Indirect interest through 24% ownership of Blade Resources



- 40 km southeast of Resolution Copper
- Shares same Laramide-age geology and host rocks as Resolution, but starts much closer to surface
- Geological analogue to the historic Christmas Mine, which produced ~ 60M pounds of copper at grades exceeding 3% copper
- 2023 ZTEM geophysics revealed a large conductive anomaly comparable in scale to Resolution
- Builds on historic Kennecott (now Rio Tinto & Phelps Dodge drilling >1% copper intercepts) with modern data and AI to refine targets for planned 5,000 m drill program planned targeting skarn and porphyry-style mineralization



Schematic view of Hot Breccia from underneath the surface showing cross sections through the Christmas deposit and Hot Breccia, and conductive anomaly from ZTEM survey under geology similar to the Resolution deposit.



Palos Verdes

Dual exposure to Vizsla's district-scale development and Prismo exploration upside

PANUCO

a productive, high potential silver district in Mexico

VIZSLA UNIQUE LOCATION

Surrounded on three sides by Vizsla Silver

6,000 METERS OF DRILL RESULTS

- Mineralization and results comparable to Vizsla Silver
- 33 holes include bonanza grades of 102 g/t gold, 3,100 g/t silver with base metals, and up to 11,520 g/t AgEq over 0.5 m, among the highest in the district

Catalysts for value creation

Driven by a systematic exploration approach that's based on results

ACTIVE EXPLORATION



SILVER KING

High-grade silver in Arizona surrounded by Resolution

- 2,000 meters of drilling in two phases
- Induced polarization study results pending

RIPSEY GOLD

Historic producer, modern exploration planned

- Phase 2 of exploration program

HOT BRECCIA

Blade Resources
eventual public listing

- 2026 objective: mobilize 5,000 m drill program targeting the deep ZTEM anomaly

LIQUIDITY EVENTS



PALOS VERDES

Strategic relationship with Vizsla Silver

- Hold in portfolio
- Advance
- Sell to Vizsla Silver
- Sell a silver royalty

Capital Structure

Shares held by founders, insiders, advisors & partners	29,045,648	25%
Vizsla Silver Corp (TSXV: VZLA)	5,100,000	5%
Float	81,017,668	70%
Total Shares Outstanding (basic)	115,163,316	100%
Officers, directors & advisor options ⁽¹⁾	4,000,000	\$760,000
Officers, directors & advisor SARs & RSUs	1,050,000	N/A
Warrants ⁽²⁾	43,836,227	\$7,890,521
Sub total	48,049,543	\$8,650,521
Total Outstanding (Fully diluted)	164,049,543	

(1) WAEP of \$0.19

(2) WAEP of \$0.18

**Strong ownership by
Founders, Management,
Advisors**

25%

Management,
Founders &
Advisors

5%

Vizsla Silver
(TSXV: VZLA)

Market cap: \$8 million ⁽¹⁾

(1) As of May 1st, 2026



CONTACT US

prismometals.com



[linkedin.com/company/prismo-metals-inc/](https://www.linkedin.com/company/prismo-metals-inc/)



x.com/PrismoMetals



[instagram.com/prismometals](https://www.instagram.com/prismometals)



[youtube.com/@prismometals](https://www.youtube.com/@prismometals)



[facebook.com/PrismoMetals](https://www.facebook.com/PrismoMetals)



1110-1111 Melville Street,
Vancouver, BC
V6E 3V6



info@prismometals.com