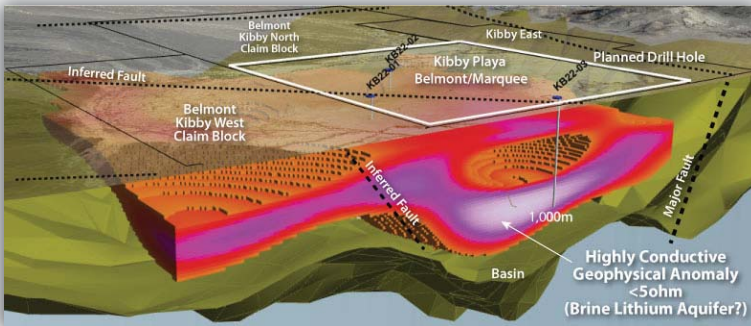


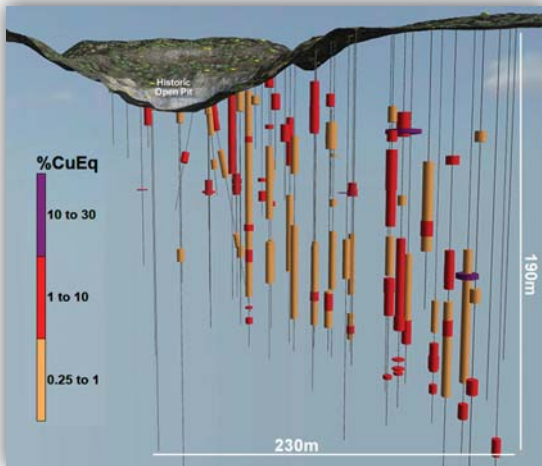
“2022 Continues To Be An Aggressive and Active Field Season With Several Upcoming Milestones”

- ▶ **Kibby Basin Lithium** - Drilling In Progress - Lithium Brine Target
- ▶ **Lone Star Copper-Gold** - Drilling Completed
- Resource Estimate in Progress
- ▶ **CBC Copper-Gold** - Phase I Drilling Completed
- Phase II to Commence Oct. 2022



■ Kibby Basin Lithium

- 3,000m drill program in progress
- Targeting large potential lithium brine aquifer (highly conductive anomaly)
- Kibby Valley basin similar features to Clayton Valley basin 60kms south
- Fully permitted for water extraction

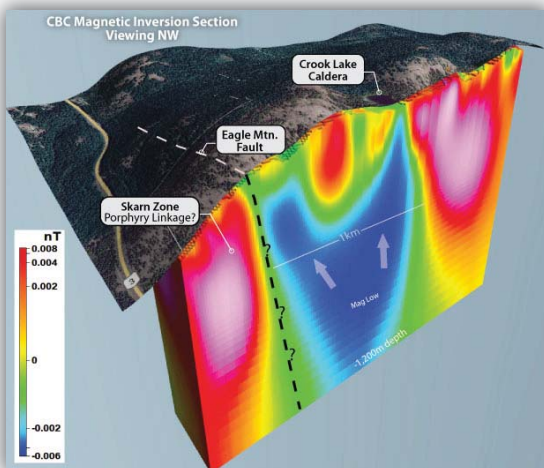


■ Lone Star Copper-Gold

- 7,888m drilling program recently completed.
- Drill Highlights:

149.4m @ 0.84 %CuEq	19.8m @ 2.77 %CuEq
79.9m @ 0.87 %CuEq	15.5m @ 5.04 %CuEq
57.9m @ 0.89 %CuEq	4.9m @ 5.67 %CuEq
70.7m @ 0.98 %CuEq	4.1m @ 6.40 %CuEq
44.2m @ 1.46 %CuEq	2.6m @ 26.06 %CuEq

- NI 43-101 resource estimate in progress



■ CBC Copper-Gold Porphyry Target

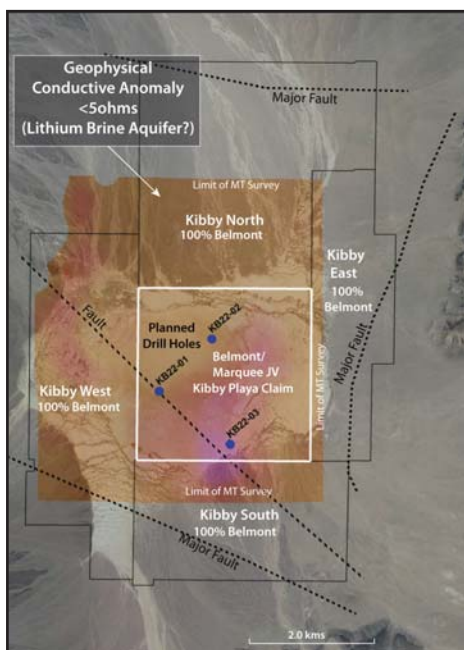
- Phase I - 2,300 m drill program identified porphyry-skarn mineralization & large propylitic alteration which typically form as halos to the core of porphyry deposits.
- Phase II drilling to start October 2022 to target porphyry core.



Greenwood B.C. & Republic Washington Mining Camps

- Four of Belmont’s properties are situated in the prolific Greenwood - Republic mining camps.
- With over 30 past producing mines, this area is considered to be one of the most concentrated mineralized areas in North America.
- All properties situated within 15kms of 200tpd toll mill.
- All necessary infrastructure nearby.
- Accessible all year round.

Belmont Properties in Southern B.C. and Washington State



Kibby Valley Basin, Nevada



Belmont has option/jv'd one of its five claim blocks in the Kibby Valley to Australian Marquee Resources. Marquee is spending \$2.5M and issuing 3M shares to Belmont for 80% of the Kibby Playa claim block.

The Kibby Valley Kibby has similar criteria for potential lithium deposits to that of the Clayton valley to the south. However unlike the Clayton Valley, Kibby Valley is fully permitted for water for brine processing and production of lithium compounds.

Management & Directors

George Sookochoff, B.Comm.	President, CEO, Director & Chairman
Gary Musil	CFO & Director
James Place, P.Geo.	Director
Laurence Sookochoff, P.Eng.	Director
Geoffrey Peretz	Director

Share Structure (July 31, 2022)

TSX.V:BEA	
Shares:	63.7M
Warrants:	30.9M
Options:	5.3M
Fully Diluted:	99.9M