

AUGUST 12, 2020
CORPORATE PRESENTATION



CANADA
SILVER
COBALT

SILVER & COBALT
CANADA'S SILVER-COBALT HEARTLAND

High-Grade and Technology
Leader in Canada's
Silver-Cobalt Heartland



TSX-V CCW | OTC CCWOF | FRANKFURT 4T9B

Forward-Looking Statements

DISCLAIMER

Neither the TSX Venture Exchange nor its Regulation Service Provider (as that term is defined in the policies of the TSX Venture Exchange) accepts responsibility for the adequacy or accuracy of this material. This presentation may contain forward-looking statements including but not limited to comments regarding the timing and content of upcoming work programs, geological interpretations, receipt of property titles, potential mineral recovery processes, etc.

Forward-looking statements address future events and conditions and therefore, involve inherent risks and uncertainties. Actual results may differ materially from those currently anticipated in such statements.

QUALIFIED PERSON

The technical information in this corporate presentation was prepared under the supervision of Canada Silver Cobalt Works Inc.'s CEO, Frank J. Basa, P.Eng., who is a member of Professional Engineers Ontario and is a Qualified Person in accordance with National Instrument 43-101.

CCW's High-Grade Castle East Discovery Meets Robust New Silver Bull Market!



The Right Location!



Top-Tier Grades



Scale Potential



Team with Proven
Local Success



Strategy To Leverage Discovery & Resource

Breaking News



Matt Halliday

New President and Chief Operating Officer

- Powerful, expanded team with fresh leadership and energy to take CCW to next level.
- Second drill rig added to Castle East.
- Maiden resource estimate on Robinson Zone featuring exceptionally high grades (250 oz Ag/t over 7.5 million ounce inferred resource)
- Planned 50,000-m 2020 drill program concurrent with advancement of permitting process leading to underground ramp construction in 2021 for the Robinson Zone

Canada Silver Cobalt Team



Matt Halliday, President, COO & VP Exploration (left) is new to the team from Kirkland Lake Gold (45km away). Frank Basa, CEO (Right).

Matt Halliday P.Geo | President, COO, VP-Exploration

Frank Basa P.Eng | CEO

Doug Robinson P.Eng | Geological Consultant

Gary Garbowski P.Eng | Advisor

Diane Tookenay | Director (First Nations Consultant)

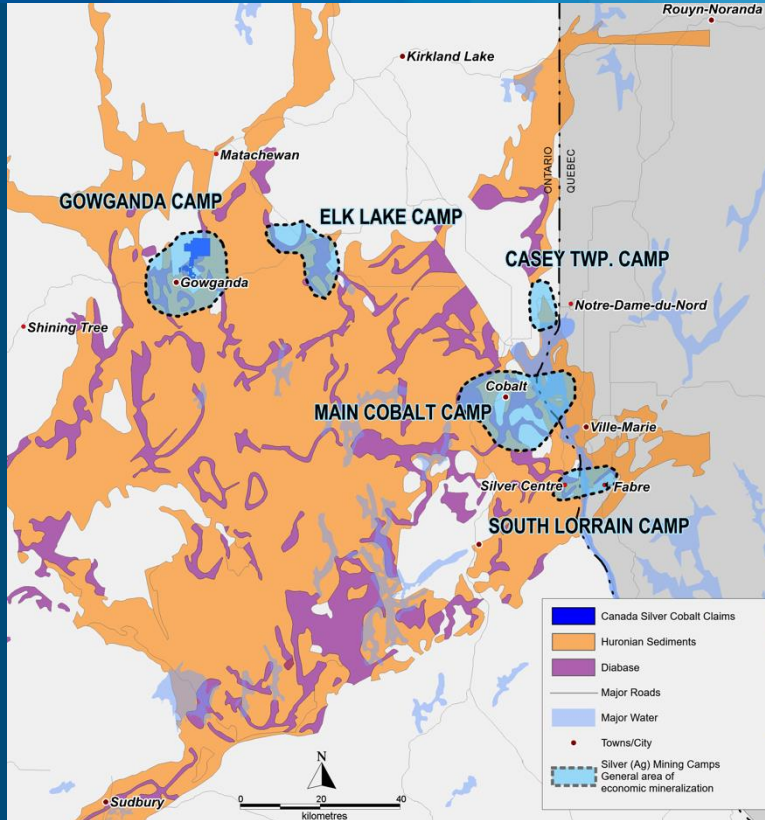
Merouane Rachidi P.Geo, PhD | GoldMinds GeoServices

Claude Duplessis P.Eng | GoldMinds GeoServices

Jacques Monette | Director (Mine Consultant)

Jules Lajoie | Consulting Geophysicist

Location – Location – Location!



CANADA'S SILVER-COBALT HEARTLAND

Birthplace of Canadian
Hard Rock Mining

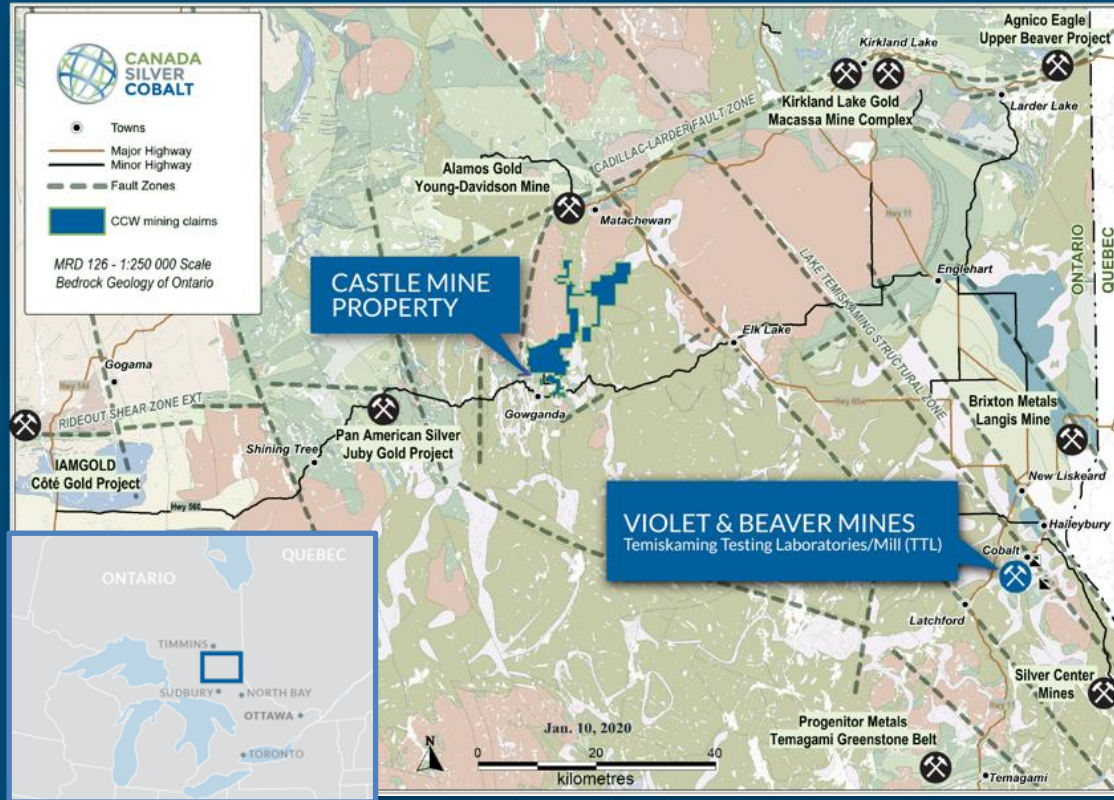
Historical Silver Production
~500 Million Ounces

Global Top Tier
SILVER & COBALT
Grades

Regional Geological Power!

Ag

Co



Castle Mine and Property

Castle mine is the only permitted underground asset in the Northern Ontario Silver-Cobalt Camp

78 km²

Total Claim Zone

Previously-producing mine

Located NE of Town of Gowganda in the middle of Gowganda silver-cobalt camp

Excellent Infrastructure

Includes all 3 former

Existing Mine Shafts

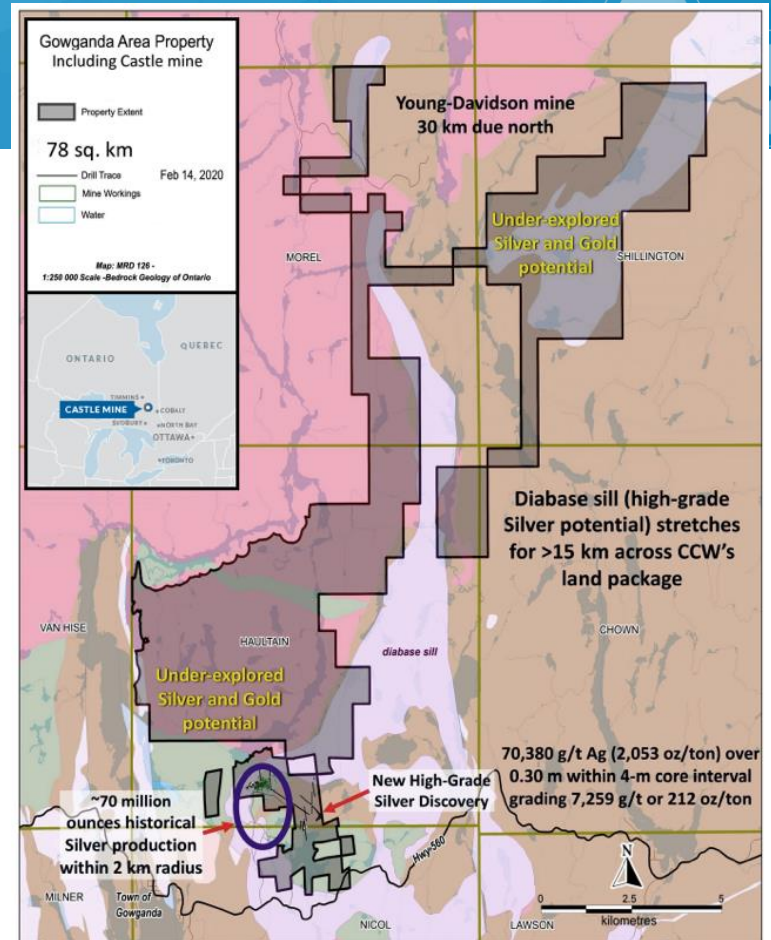
Castle Mine Shafts #1, #2 and #3 and the adit (near #2 and #3)

First Nations agreements in place

Strong

Exploration Potential

extends 17km northeast



Castle East Discovery

One of the most significant new grassroots high-grade Silver discoveries in Northern Ontario in several decades!

Top tier silver grades

Potential scale

this area, east of 3 past producers received little historical attention

Maiden resource
(May 2020)



Castle East High Grade Silver Discovery Gowganda Camp, Miller Lake Basin

Just a small fraction of Castle East has been drilled to date

ROBINSON DISCOVERY ZONE

Hits up to 70,380 g/t Ag (2,053 oz/ton) over 0.3m within 4m of 7,259 g/t (212 oz/ton) in CA-19-08-02 (50% - 70% true width).

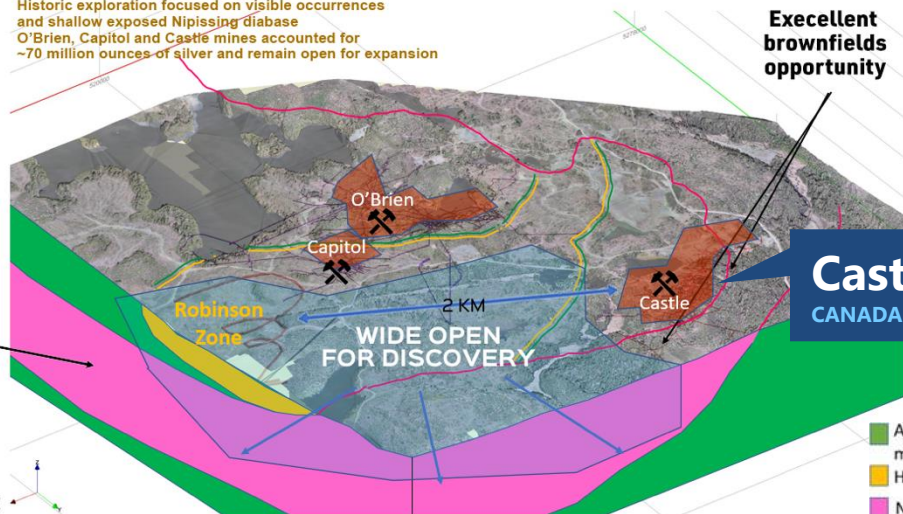
Thick unexposed Nipissing horizon, thickening to centre of basin, large volume to explore

MAIDEN INFERRED RESOURCE (refer to May 28, 2020 NR)

Zones 1A and 1B in the Robinson Zone have an average silver grade of 8,582 g/t (250 oz/ton) in a combined 27,400 tonnes of material for a total of 7.56 million Inferred ounces using a cut-off grade of 258 g/t silver equivalent (mineral resources that are not mineral reserves do not have demonstrated economic viability)

Historic exploration focused on visible occurrences and shallow exposed Nipissing diabase
O'Brien, Capitol and Castle mines accounted for ~70 million ounces of silver and remain open for expansion

Excellent brownfields opportunity



Castle
CANADA SILVER COBALT

- Archean – mostly mafic volcanic
- Huronian Sediment
- Nipissing Diabase

DRILLING RAMPS UP AT CASTLE EAST

June 30, 2020 News: Canada Silver Cobalt appoints Matt Halliday, current VP Exploration and former Kirkland Lake Gold resource geologist, as President & COO as CCW prepares to add a second drill right to further build out the growing Castle East Discovery

QUALIFIED PERSON

The technical information contained herein was reviewed and approved by Mr. Meruane Rachidi, Ph.D., P.GEO., (APGO, APEGNB and OGQ) of GoldMinds Geoservices a Qualified Person in accordance with National Instrument 43-101

Robinson Zone Discovery | 250 Ag oz/t over 7.5M ounce inferred resource

Ag

Co

INTERSECTION HIGHLIGHTS:



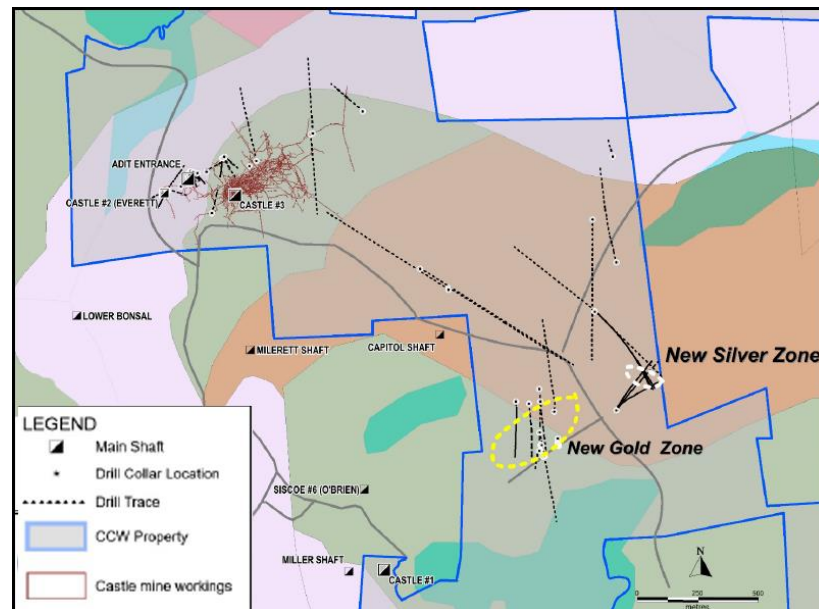
CS-19-08-W01 — (50,583 gpt Ag over 0.6m)
Massive native silver in CS-19-08-W01 @ ~427m vertical depth



CS-19-08-W02 (70,380 gpt Ag over 0.3m)
Massive native silver in hairline silver-filled fractures in CS-19-08-W02 @ ~418m vertical depth

GRADE + SCALE POTENTIAL

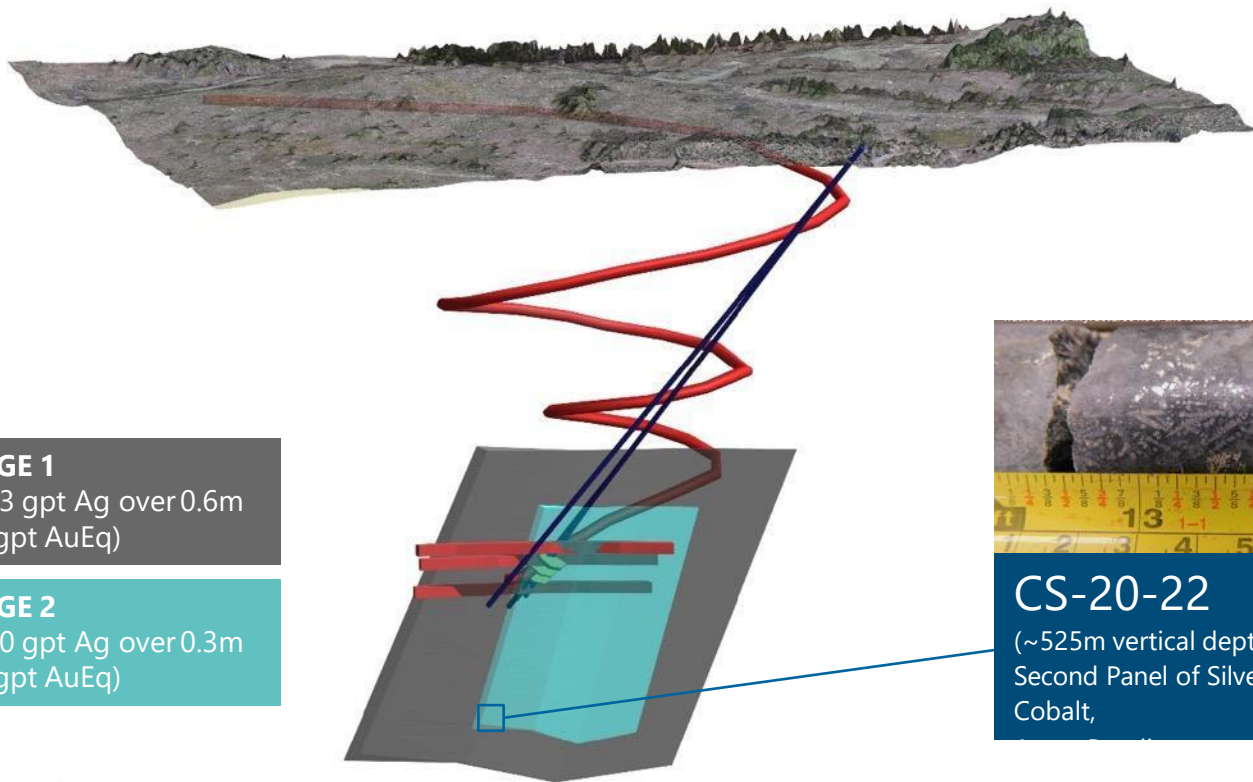
TOTAL VOLUME OF THE DIABASE AT CASTLE EAST ESTIMATED
970 Million – 1.45 Billion cubic meters



Castle Mine | Future Robinson Zone Ramp

Ag

Co



WEDGE 1

50,583 gpt Ag over 0.6m
(568 gpt AuEq)

WEDGE 2

70,380 gpt Ag over 0.3m
(791 gpt AuEq)

CS-20-22

(~525m vertical depth)
Second Panel of Silver and
Cobalt,

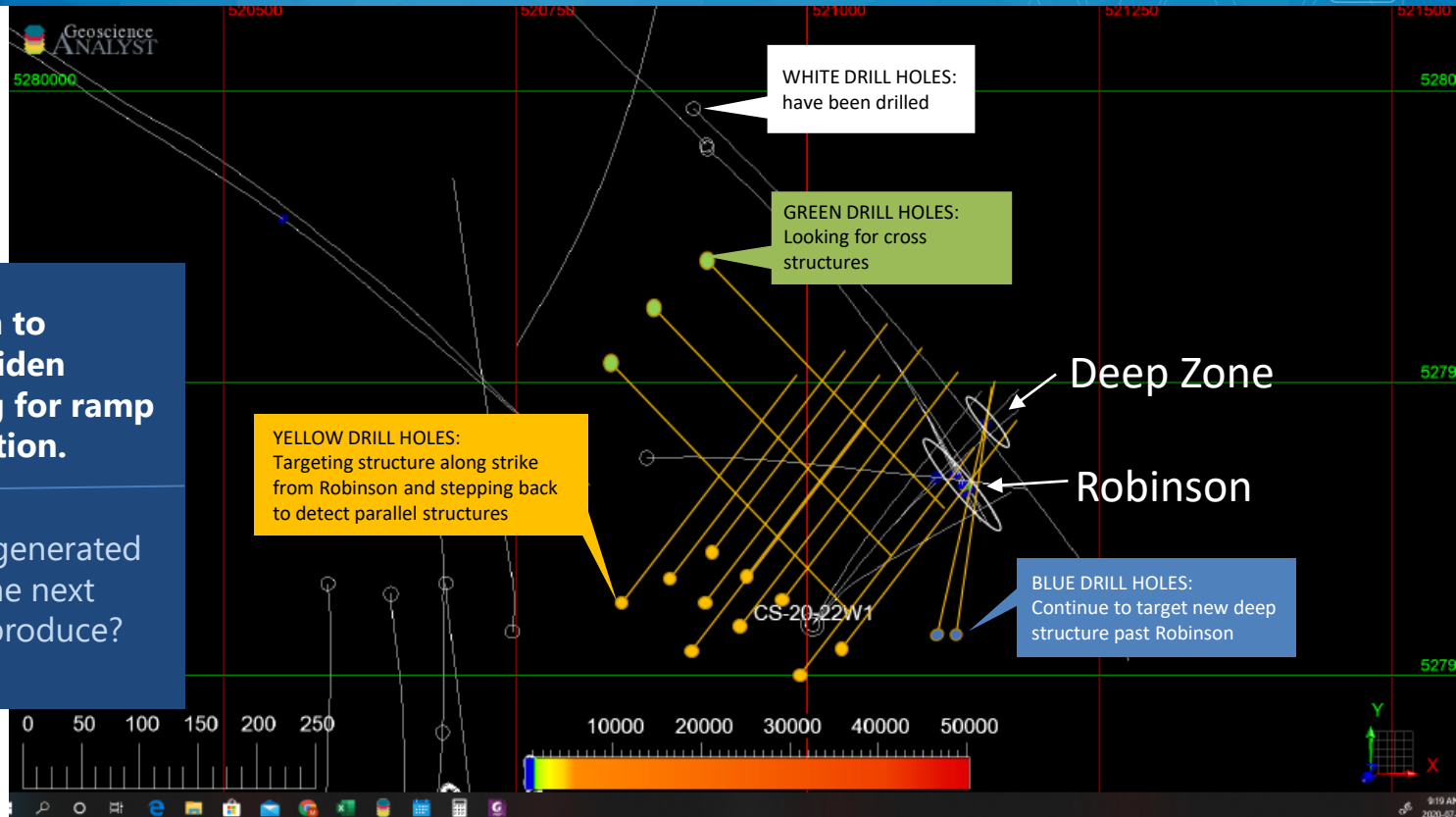
The Next 10,000 Meters in a 50,000 Meter Planned Drill Program

PHASE 1

- 15-25 holes;
- Up to 10-15,000m;
- Depth: 500-800 meters

Aggressive drill program to expand and upgrade maiden resource while preparing for ramp permitting and construction.

~3,000 meters of drilling generated 7.7M oz Ag, what could the next 10,000 meters of drilling produce?



First Ever 43-101 Resource in Cobalt | Gowganda Camp

Zone 1A and 1B

Average silver grade 8,582 g/t (250.2 oz/ton) in a combined 27,000 tonnes of material, Total 7,560,200 Inferred oz of silver

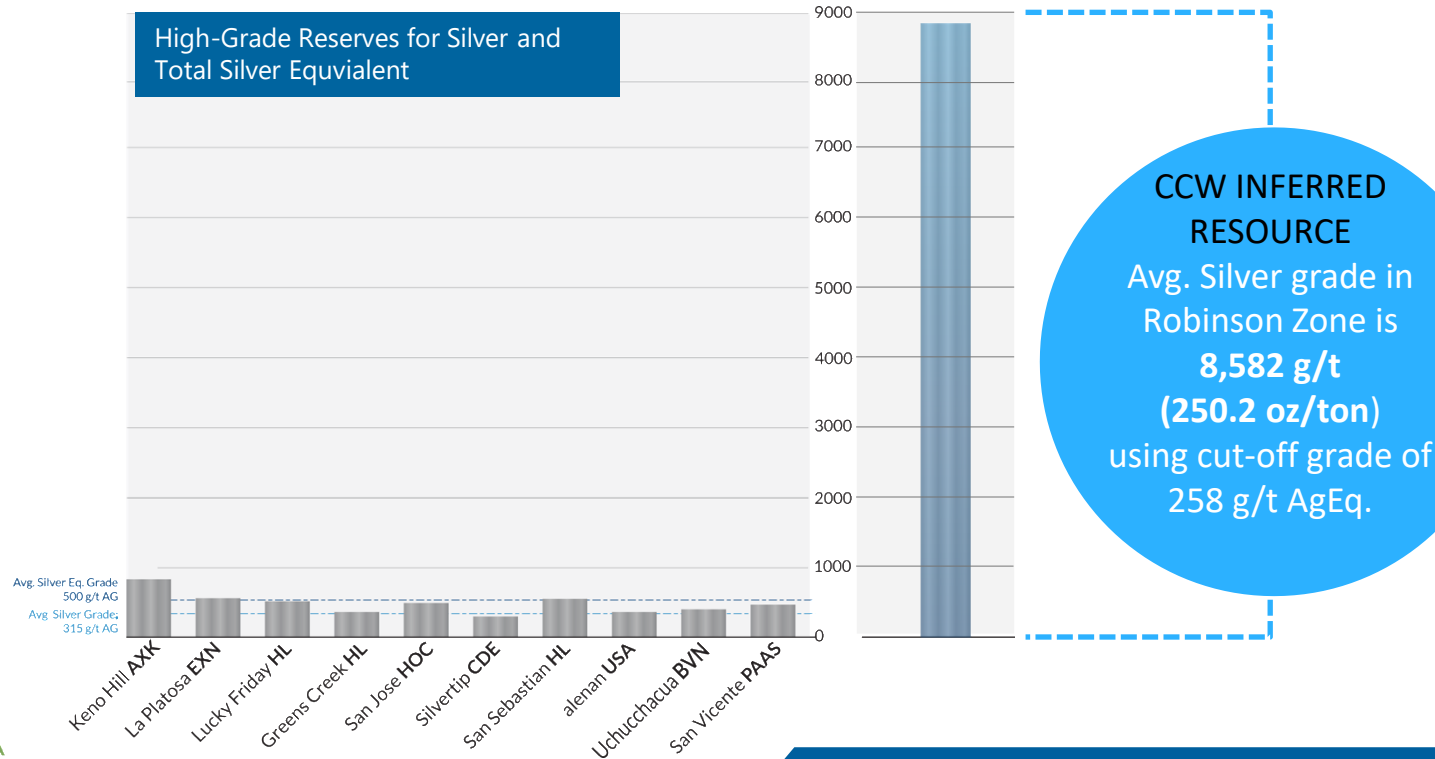
Mineral Resource Estimate at Castle East ¹

| Inferred Mineral Resources | Ag g/t | Co g/t | Cu g/t | Ni g/t | Pb g/t | Zn g/t | AgEqg/t | Tonnes | Ag oz | AgEq oz |
|---|--------------|--------------|------------|------------|-----------|-----------|--------------|---------------|------------------|------------------|
| Zone 1A | 7,960 | 946 | 349 | 790 | 16 | 12 | 8,042 | 8,100 | 2,073,000 | 2,094,200 |
| Zone 1B | 8,843 | 2,308 | 325 | 336 | 30 | 52 | 8,998 | 19,300 | 5,487,200 | 5,583,200 |
| Zone 2A | 38 | 5,673 | 2,101 | 453 | 118 | 108 | 426 | 5,500 | 6,800 | 75,300 |
| Total Inferred Mineral Resources | 7,149 | 2,537 | 628 | 467 | 41 | 52 | 7,325 | 32,900 | 7,567,000 | 7,752,700 |

(1) Independently prepared by GoldMinds Geoservices Inc. in accordance with National Instrument 43-101 using a cut-off grade of 258 AgEq g/t. See company news release May 28, 2020.

10 Peer Company Silver Reserves Compared to CCW's Robinson Zone 250 Ag oz/t 7.5M oz Maiden Inferred Resource

AVERAGE SILVER EQUIVALENT AND AVERAGE SILVER GRADE RESERVES



Next Steps At Castle:

Expand Castle East drilling, vector toward new discovery areas

Accelerate permitting process

Develop new targets at Castle mine in preparation for fresh underground drilling



Vertically Integrated Leader of Canada's Silver-Cobalt Heartland!



**Proof of
concept test**



3 Silver Bars Poured Q4 2019
from Castle Mine
Waste Material



Canada Silver Cobalt Acquires Lab/Metals Processing Facility¹

- Well-established facility in town of Cobalt specializes in high-grade mineralization
- High capacity bullion furnace produces SILVER and GOLD dore bars
- Bulk sampling, e-waste processing potential
- Powerful synergies with CCW's proprietary green Re-2OX process

(1) See company news releases Oct. 10 and 24 and Dec. 4, 2019 and Jan. 10, 2020.

Capital Structure & Five-Year Share Performance

TSX-V
CCW

OTC CCWOF
FRANKFURT 4T9B

Shares Outstanding 98,847,488

Warrants* 8,244,830

Options* 9,038,000

Fully Diluted ^{*21/072020} 116,130,318





CANADA
SILVER
COBALT

MINING OFFICE

Canada Silver Cobalt Works Inc.

2875 Ave. Granada
Rouyn-Noranda, QC J9Y 1J1

Office 1 819 797 4144

Fax 1 819 762 2306

FOR MORE INFORMATION

Matt Halliday P.Geo, President, COO, VP Exploration

matt@canadacobaltworks.com

+1.514.708.7390

canadasilvercobaltworks.com

TSX-V **CCW** | OTC **CCWOF** | FRANKFURT **4T9B**